

\$559,000 - 12 Norwood Close, St. Albert

MLS® #E4432065

\$559,000

3 Bedroom, 2.50 Bathroom, 1,935 sqft

Single Family on 0.00 Acres

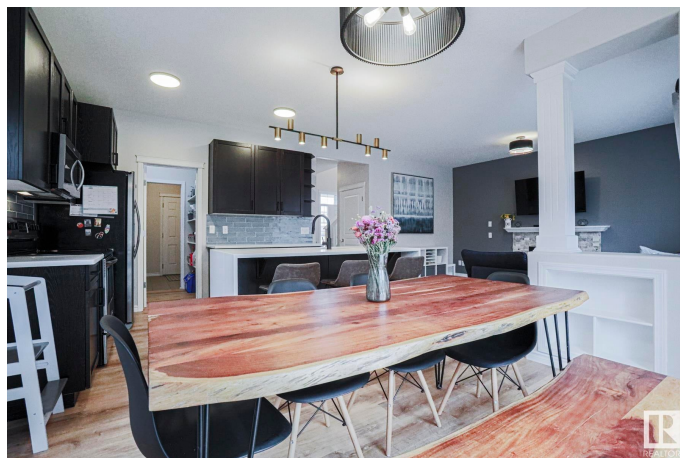
North Ridge, St. Albert, AB

Beautifully updated, 2 storey home in a quiet cul de sac. Open concept kitchen/livingroom with lots of natural light, quartz waterfall island counter top, new vinyl plank flooring and newer stainless steel appliances. Walk-thru pantry and coffee bar, updated backsplash and quartz counters. The whole house has been recently painted and quartz counters/sinks, fixtures in the bathrooms, updated lighting fixtures, new closet organizers and mudroom shelving. Upstairs there is a large primary bedroom w/ ensuite, two other good size bedrooms, 4piece bathroom and a huge south facing bonus room. An oversized Heated double garage w/new door and a large backyard finish off this lovely property. The basement is ready for you complete with roughed in plumbing and lots of room for a growing family. Make this one your new home!

Built in 2010

Essential Information

MLS® #	E4432065
Price	\$559,000
Bedrooms	3
Bathrooms	2.50
Full Baths	2
Half Baths	1
Square Footage	1,935



Acres	0.00
Year Built	2010
Type	Single Family
Sub-Type	Detached Single Family
Style	2 Storey
Status	Active

Community Information

Address	12 Norwood Close
Area	St. Albert
Subdivision	North Ridge
City	St. Albert
County	ALBERTA
Province	AB
Postal Code	T8N 3Y9

Amenities

Amenities	Air Conditioner, Deck, Hot Water Natural Gas
Parking	Double Garage Attached

Interior

Interior Features	ensuite bathroom
Appliances	Air Conditioning-Central, Alarm/Security System, Dishwasher-Built-In, Fan-Ceiling, Garage Control, Garage Opener, Microwave Hood Fan, Refrigerator, Stove-Electric, Vacuum System Attachments, Vacuum Systems, Washer, Window Coverings, Garage Heater
Heating	Forced Air-1, Natural Gas
Fireplace	Yes
Fireplaces	Mantel
Stories	2
Has Basement	Yes
Basement	Full, Unfinished

Exterior

Exterior	Wood, Stone, Vinyl
Exterior Features	Fenced, Flat Site, Golf Nearby, Landscaped, Playground Nearby, Public Transportation, Schools, Shopping Nearby
Roof	Asphalt Shingles
Construction	Wood, Stone, Vinyl

Foundation Concrete Perimeter

Additional Information

Date Listed April 22nd, 2025

Days on Market 3

Zoning Zone 24

DATA IS DEEMED RELIABLE BUT IS NOT GUARANTEED ACCURATE BY THE REALTORS® ASSOCIATION OF EDMONTON. COPYRIGHT 2025 BY THE REALTORS® ASSOCIATION OF EDMONTON. ALL RIGHTS RESERVED.Trademarks are owned or controlled by the Canadian Real Estate Association (CREA) and identify real estate professionals who are members of CREA (REALTOR®, REALTORS®) and/or the quality of services they provide (MLS®, Multiple Listing Service®)

Listing information last updated on April 25th, 2025 at 5:32am MDT