

\$139,900 - 104 11446 40 Avenue, Edmonton

MLS® #E4430946

\$139,900

2 Bedroom, 2.00 Bathroom, 962 sqft

Condo / Townhouse on 0.00 Acres

Royal Gardens (Edmonton), Edmonton, AB

Welcome to Nova Place located in Royal Gardens - steps away from all amenities, including grocery stores, cafe's, restaurants & shopping. This 2 bedroom, 2 bath condo is the perfect place to make a home. A spacious entry invites you in to find a space filled with natural light & 10' ceilings. The eat in kitchen offers plenty of cabinets & over looks the living room with access to the 8x10 balcony. Large primary suite with walk through closet & 4pc ensuite. Second bedrooms is also generous in size, 4pc bath & plenty of storage Complement the functional, yet spacious layout. Easy access to Transit, LRT, Whitemud, 111 St & Southgate Mall - don't miss out on this Pet friendly complex. Condo fees include HEAT & WATER.

Built in 2004

Essential Information

MLS® #	E4430946
Price	\$139,900
Bedrooms	2
Bathrooms	2.00
Full Baths	2
Square Footage	962
Acres	0.00
Year Built	2004



Type	Condo / Townhouse
Sub-Type	Lowrise Apartment
Style	Single Level Apartment
Status	Active

Community Information

Address	104 11446 40 Avenue
Area	Edmonton
Subdivision	Royal Gardens (Edmonton)
City	Edmonton
County	ALBERTA
Province	AB
Postal Code	T6J 0R5

Amenities

Amenities	Ceiling 10 ft., Patio, See Remarks
Parking	Heated, Single Indoor, Underground

Interior

Interior Features	ensuite bathroom
Appliances	Dishwasher-Built-In, Dryer, Microwave Hood Fan, Refrigerator, Stove-Electric, Washer, Window Coverings
Heating	Baseboard, Natural Gas
# of Stories	4
Stories	1
Has Basement	Yes
Basement	None, No Basement

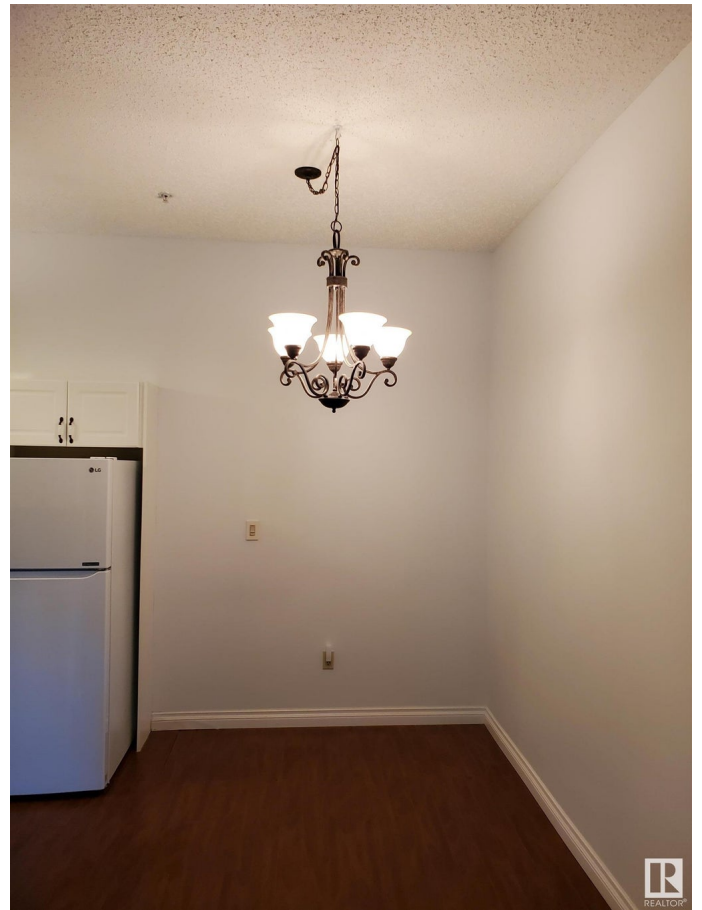
Exterior

Exterior	Wood, Vinyl
Exterior Features	Landscaped, Public Transportation, Schools, Shopping Nearby
Roof	Tar & Gravel
Construction	Wood, Vinyl
Foundation	Concrete Perimeter

Additional Information

Date Listed	April 15th, 2025
Days on Market	4
Zoning	Zone 16

Condo Fee \$846



DATA IS DEEMED RELIABLE BUT IS NOT GUARANTEED ACCURATE BY THE REALTORS® ASSOCIATION OF EDMONTON. COPYRIGHT 2025 BY THE REALTORS® ASSOCIATION OF EDMONTON. ALL RIGHTS RESERVED. Trademarks are owned or controlled by the Canadian Real Estate Association (CREA) and identify real estate professionals who are members of CREA (REALTOR®, REALTORS®) and/or the quality of services they provide (MLS®, Multiple Listing Service®)

Listing information last updated on April 19th, 2025 at 7:32am MDT