

\$145,000 - 8918c 144 Avenue, Edmonton

MLS® #E4429981

\$145,000

2 Bedroom, 1.00 Bathroom, 500 sqft

Condo / Townhouse on 0.00 Acres

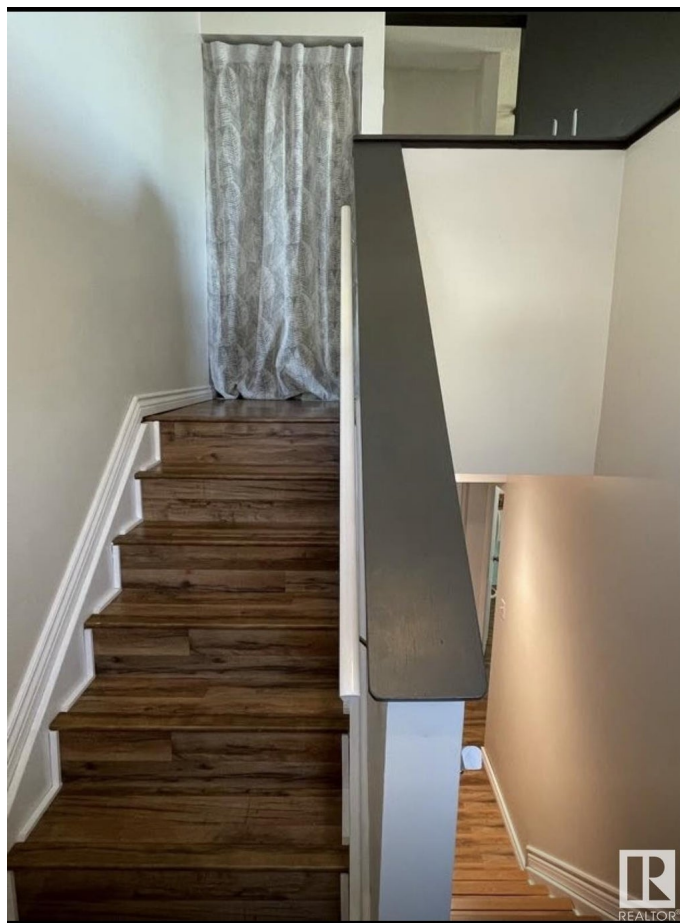
Evansdale, Edmonton, AB

Welcome to this beautifully updated townhouse, ideally located in a family-friendly community. This south-facing home offers an abundance of natural light and park views from your very own patio. Inside, youâ€™ll find a thoughtfully renovated interior, featuring gorgeous stone countertops and stainless steel appliances in the kitchen. The home also boasts a spacious laundry room with storage and newer washer and dryer. With two spacious bedrooms and a well-appointed bathroom, this townhouse offers both comfort and convenience. Itâ€™s perfect for a small family or anyone looking for a peaceful retreat in a prime location. Situated just minutes from excellent schools, parks, and local amenities, this home combines style, functionality, and an unbeatable location.

Built in 1974

Essential Information

| | |
|----------------|-----------|
| MLS® # | E4429981 |
| Price | \$145,000 |
| Bedrooms | 2 |
| Bathrooms | 1.00 |
| Full Baths | 1 |
| Square Footage | 500 |
| Acres | 0.00 |
| Year Built | 1974 |



| | |
|----------|-------------------|
| Type | Condo / Townhouse |
| Sub-Type | Townhouse |
| Style | Bi-Level |
| Status | Active |

Community Information

| | |
|-------------|------------------|
| Address | 8918c 144 Avenue |
| Area | Edmonton |
| Subdivision | Evansdale |
| City | Edmonton |
| County | ALBERTA |
| Province | AB |
| Postal Code | T5E 5V4 |

Amenities

| | |
|-----------|--------------------------------------------------------------------------------------------------------------------------------------------------------|
| Amenities | Off Street Parking, On Street Parking, No Animal Home, No Smoking Home, Parking-Plug-Ins, Patio, Security Window Bars, Storage-In-Suite, Vinyl Windows |
| Parking | Stall |

Interior

| | |
|--------------|---------------------------------------------|
| Appliances | Dryer, Refrigerator, Stove-Electric, Washer |
| Heating | Forced Air-1, Natural Gas |
| Stories | 2 |
| Has Basement | Yes |
| Basement | Full, Finished |

Exterior

| | |
|-------------------|--------------------------------------------------------------------|
| Exterior | Wood |
| Exterior Features | Playground Nearby, Public Transportation, Schools, Shopping Nearby |
| Roof | Asphalt Shingles |
| Construction | Wood |
| Foundation | Concrete Perimeter |

School Information

| | |
|------------|-----------------------|
| Elementary | St.Anne, Dickensfield |
| Middle | Cardinal Leger |

Additional Information

| | |
|-------------|------------------|
| Date Listed | April 10th, 2025 |
|-------------|------------------|

Days on Market 8
Zoning Zone 02
Condo Fee \$365



DATA IS DEEMED RELIABLE BUT IS NOT GUARANTEED ACCURATE BY THE REALTORS® ASSOCIATION OF EDMONTON. COPYRIGHT 2025 BY THE REALTORS® ASSOCIATION OF EDMONTON. ALL RIGHTS RESERVED.Trademarks are owned or controlled by the Canadian Real Estate Association (CREA) and identify real estate professionals who are members of CREA (REALTOR®, REALTORS®) and/or the quality of services they provide (MLS®, Multiple Listing Service®)

Listing information last updated on April 17th, 2025 at 11:32pm MDT