

\$499,000 - 1103 31 Street, Edmonton

MLS® #E4429902

\$499,000

3 Bedroom, 3.50 Bathroom, 1,620 sqft

Single Family on 0.00 Acres

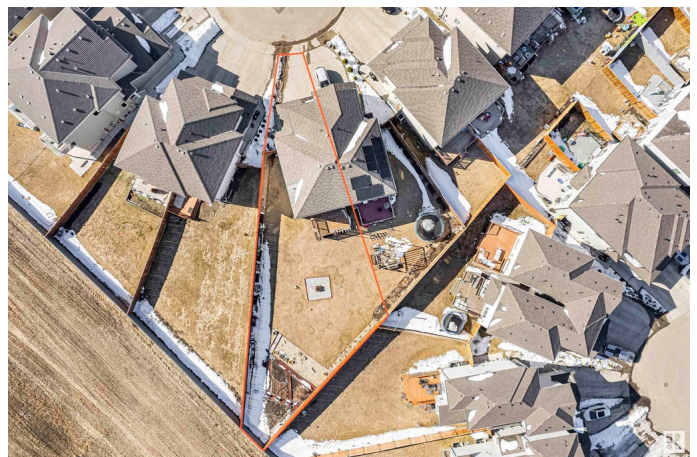
Laurel, Edmonton, AB

This stunning semi-detached family home, built by Crystal Creek, offers over 1620 sq. ft. of open-concept living space, plus a fully developed basement. Featuring 4 spacious bedrooms and 3.5 bathrooms, including a master ensuite, the home is perfect for growing families. The kitchen boasts a large island and corner pantry and the living room features a cozy fireplace. Enjoy the convenience of upstairs laundry. The massive, fully fenced backyard is beautifully landscaped, complete with a spacious deck for outdoor entertaining. Additional highlights include a double car garage and a quiet cul-de-sac location.

Built in 2017

Essential Information

| | |
|----------------|---------------|
| MLS® # | E4429902 |
| Price | \$499,000 |
| Bedrooms | 3 |
| Bathrooms | 3.50 |
| Full Baths | 3 |
| Half Baths | 1 |
| Square Footage | 1,620 |
| Acres | 0.00 |
| Year Built | 2017 |
| Type | Single Family |



| | |
|----------|-------------|
| Sub-Type | Half Duplex |
| Style | 2 Storey |
| Status | Active |

Community Information

| | |
|-------------|----------------|
| Address | 1103 31 Street |
| Area | Edmonton |
| Subdivision | Laurel |
| City | Edmonton |
| County | ALBERTA |
| Province | AB |
| Postal Code | T6T 2C7 |

Amenities

| | |
|----------------|------------------------|
| Amenities | Deck, See Remarks |
| Parking Spaces | 4 |
| Parking | Double Garage Attached |

Interior

| | |
|-------------------|---|
| Interior Features | ensuite bathroom |
| Appliances | Dishwasher-Built-In, Dryer, Garage Control, Garage Opener, Hood Fan, Refrigerator, Stove-Electric, Washer, Window Coverings |
| Heating | Forced Air-1, Natural Gas |
| Stories | 3 |
| Has Basement | Yes |
| Basement | Full, Finished |

Exterior

| | |
|-------------------|--|
| Exterior | Wood, Vinyl |
| Exterior Features | Backs Onto Park/Trees, Cul-De-Sac, Fenced, Level Land, Low Maintenance Landscape, No Back Lane, Public Transportation, Schools, Shopping Nearby, See Remarks |
| Roof | Asphalt Shingles |
| Construction | Wood, Vinyl |
| Foundation | Concrete Perimeter |

Additional Information

| | |
|----------------|-----------------|
| Date Listed | April 9th, 2025 |
| Days on Market | 10 |
| Zoning | Zone 30 |

DATA IS DEEMED RELIABLE BUT IS NOT GUARANTEED ACCURATE BY THE REALTORS® ASSOCIATION OF EDMONTON. COPYRIGHT 2025 BY THE REALTORS® ASSOCIATION OF EDMONTON. ALL RIGHTS RESERVED. Trademarks are owned or controlled by the Canadian Real Estate Association (CREA) and identify real estate professionals who are members of CREA (REALTOR®, REALTORS®) and/or the quality of services they provide (MLS®, Multiple Listing Service®)

Listing information last updated on April 19th, 2025 at 3:17am MDT