

Courtesy Of Katherine Miron Of RE/MAX Excellence

\$434,900 - 702 9923 103 Street, Edmonton

MLS® #E4429788

\$434,900

2 Bedroom, 2.00 Bathroom, 1,322 sqft
Condo / Townhouse on 0.00 Acres

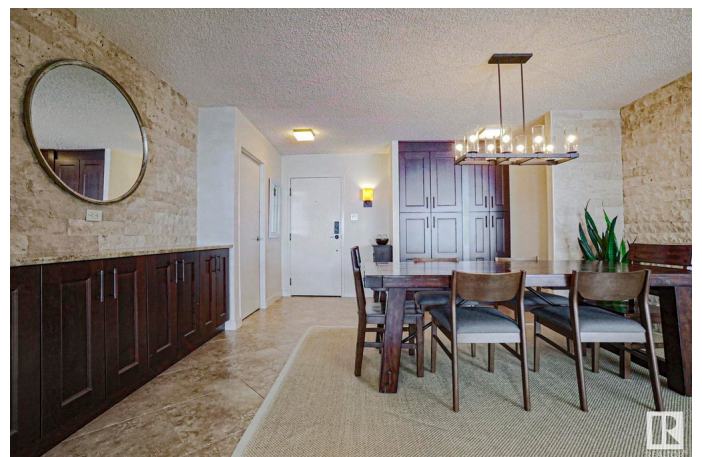
Downtown (Edmonton), Edmonton, AB

Step into this elegant 2-bed, 2-bath condo, spanning 1,300+ sq ft of timeless luxury. The gourmet kitchen features full-height wood cabinetry and granite countertops, flowing into a dining area with stone feature walls and an open living room with River Valley views. The primary bedroom offers a walk-through double closet and ensuite with vanity. The second bedroom, with French doors and built-in shelving, doubles as a home office. Italian porcelain tiles cover the condo, including two south-facing balconies. Valley Towers in Edmonton offers three units per floor and amenities like an indoor pool, spa, sauna, gym, and social room. Gated parking includes a heated underground space with storage. Condo fees cover all utilities and amenities. Steps from Rogers Place and LRT, this is refined living at its best.

Built in 1977

Essential Information

MLS® #	E4429788
Price	\$434,900
Bedrooms	2
Bathrooms	2.00
Full Baths	2
Square Footage	1,322
Acres	0.00



Year Built	1977
Type	Condo / Townhouse
Sub-Type	Apartment High Rise
Style	Single Level Apartment
Status	Active

Community Information

Address	702 9923 103 Street
Area	Edmonton
Subdivision	Downtown (Edmonton)
City	Edmonton
County	ALBERTA
Province	AB
Postal Code	T5K 2J3

Amenities

Amenities	Barbecue-Built-In, Exercise Room, Hot Tub, Intercom, Parking-Visitor, Party Room, Patio, Pool-Indoor, Recreation Room/Centre, Sauna; Swirlpool; Steam, Secured Parking, Workshop, Storage Cage
Parking	Heated, Parkade, Underground
Has Pool	Yes

Interior

Interior Features	ensuite bathroom
Appliances	Dryer, Garage Control, Hood Fan, Refrigerator, Stove-Electric, Washer, Window Coverings
Heating	Hot Water, Natural Gas
# of Stories	24
Stories	1
Has Basement	Yes
Basement	None, No Basement

Exterior

Exterior	Concrete, Composition
Exterior Features	Golf Nearby, Public Transportation, River Valley View, Schools, Shopping Nearby, View City, View Downtown, Private Park Access
Roof	Tar & Gravel
Construction	Concrete, Composition
Foundation	Concrete Perimeter

Additional Information

Date Listed	April 9th, 2025
Days on Market	6
Zoning	Zone 12
Condo Fee	\$1,024

DATA IS DEEMED RELIABLE BUT IS NOT GUARANTEED ACCURATE BY THE REALTORS® ASSOCIATION OF EDMONTON. COPYRIGHT 2025 BY THE REALTORS® ASSOCIATION OF EDMONTON. ALL RIGHTS RESERVED. Trademarks are owned or controlled by the Canadian Real Estate Association (CREA) and identify real estate professionals who are members of CREA (REALTOR®, REALTORS®) and/or the quality of services they provide (MLS®, Multiple Listing Service®)

Listing information last updated on April 15th, 2025 at 6:17pm MDT