

Courtesy Of Brent Anderson Of Century 21 Masters

\$599,900 - 10436 18 Avenue, Edmonton

MLS® #E4429033

\$599,900

4 Bedroom, 2.50 Bathroom, 2,125 sqft

Single Family on 0.00 Acres

Keheewin, Edmonton, AB

Growing families, here's your perfect fit! Bright, airy + updated 2100 sq ft two-storey home with 4 large bedrooms upstairs! You'll love the brand new white quartz kitchen (2021) with s/s appliances + a 4x5 ft island! Enjoy new triple-pane windows throughout (2015-2020), new shingles (2020) as well as textured walnut LVP flooring (2017)! The main level of this home offers a harmonious blend of elegance + functionality. Enjoy the cozy sunken living room. Relax in the huge primary suite featuring a bay window, his + her closets, + spacious en-suite with double sinks. The modern finished basement (2013) offers a large rec room + plenty of storage or room to grow. You + your kids will love the big backyard where you will enjoy loads of summer fun with family-friendly cul-de-sac, + 2-minute walk to buses, school, playground + green spaces, including an off-leash park. Amenities at your fingertips with LRT, Century Park shopping centers + South Common just a stone's throw away. Don't miss this one!

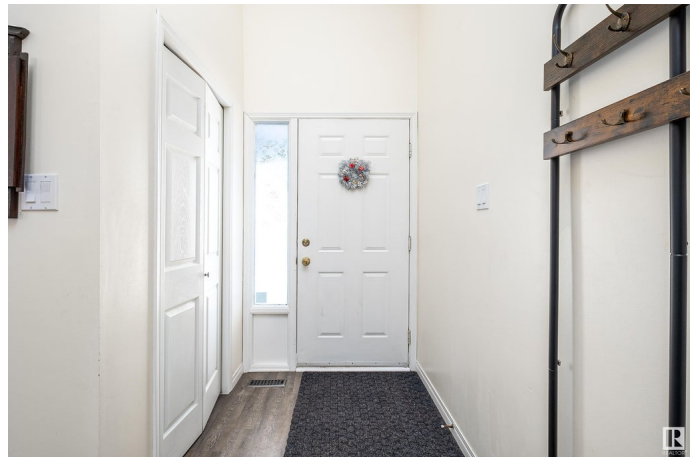
Built in 1981

Essential Information

MLS® # E4429033

Price \$599,900

Bedrooms 4



Bathrooms	2.50
Full Baths	2
Half Baths	1
Square Footage	2,125
Acres	0.00
Year Built	1981
Type	Single Family
Sub-Type	Detached Single Family
Style	2 Storey
Status	Active

Community Information

Address	10436 18 Avenue
Area	Edmonton
Subdivision	Keheewin
City	Edmonton
County	ALBERTA
Province	AB
Postal Code	T6J 4Z8

Amenities

Amenities	Deck, Detectors Smoke, No Animal Home, No Smoking Home, Vaulted Ceiling
Parking Spaces	2
Parking	Double Garage Attached

Interior

Interior Features	ensuite bathroom
Appliances	Air Conditioning-Central, Dishwasher-Built-In, Dryer, Garage Control, Garage Opener, Microwave Hood Fan, Refrigerator, Storage Shed, Washer, Window Coverings, See Remarks, Stove-Induction, TV Wall Mount
Heating	Forced Air-1, Natural Gas
Fireplace	Yes
Fireplaces	Brick Facing
Stories	3
Has Basement	Yes
Basement	Full, Partially Finished

Exterior

Exterior	Wood, Brick, Vinyl
Exterior Features	Airport Nearby, Fenced, Golf Nearby, Landscaped, Playground Nearby, Public Transportation, Schools, Shopping Nearby
Roof	Asphalt Shingles
Construction	Wood, Brick, Vinyl
Foundation	Concrete Perimeter

School Information

Elementary	Keheewin School
Middle	D.S. MacKenzie School
High	Harry Ainlay School

Additional Information

Date Listed	April 4th, 2025
Days on Market	3
Zoning	Zone 16

DATA IS DEEMED RELIABLE BUT IS NOT GUARANTEED ACCURATE BY THE REALTORS® ASSOCIATION OF EDMONTON. COPYRIGHT 2025 BY THE REALTORS® ASSOCIATION OF EDMONTON. ALL RIGHTS RESERVED. Trademarks are owned or controlled by the Canadian Real Estate Association (CREA) and identify real estate professionals who are members of CREA (REALTOR®, REALTORS®) and/or the quality of services they provide (MLS®, Multiple Listing Service®)

Listing information last updated on April 7th, 2025 at 2:47pm MDT