

# \$699,000 - 114 Hemingway Crescent, Spruce Grove

MLS® #E4428373

**\$699,000**

3 Bedroom, 2.50 Bathroom, 2,292 sqft

Single Family on 0.00 Acres

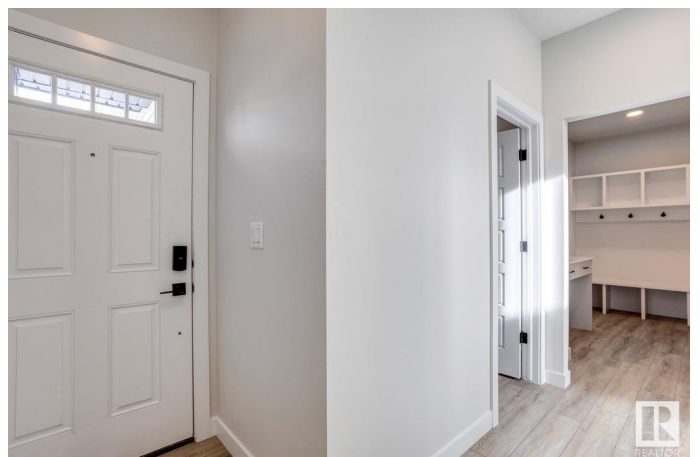
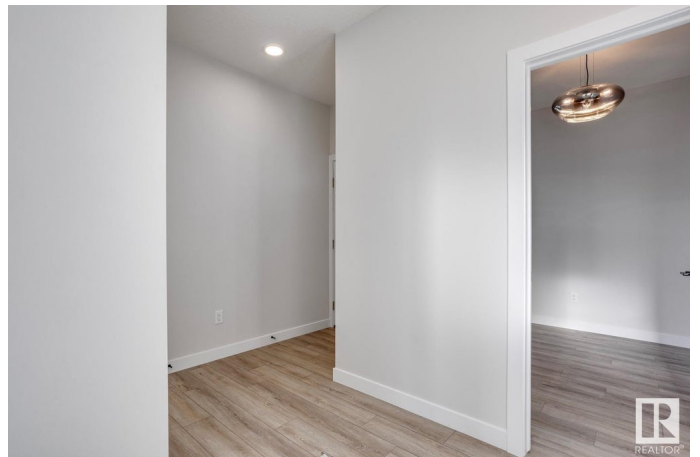
Harvest Ridge, Spruce Grove, AB

Stunning 2-storey new build home backing onto serene green space! This beautifully designed home features an open-concept layout with soaring ceilings filling the space with natural light. The chef's kitchen comes with appliances, ample cabinetry, and a large island—perfect for entertaining. The living room offers an electric fireplace, great for unwinding with family after a long day. A main-floor den offers space for a private home office. The spacious primary suite upstairs includes a luxurious 5pc ensuite with separate sinks, a soaker tub, a shower, and a walk-through to the laundry room from the closet. Also upstairs, a bonus room, 2 more bedrooms and a 4pc bath. A side entrance adds flexibility with access to the main level and basement. The home is located conveniently close to schools and all amenities. \*Photos are representative\*

Built in 2025

## Essential Information

MLS® #	E4428373
Price	\$699,000
Bedrooms	3
Bathrooms	2.50
Full Baths	2
Half Baths	1



Square Footage	2,292
Acres	0.00
Year Built	2025
Type	Single Family
Sub-Type	Detached Single Family
Style	2 Storey
Status	Active

### **Community Information**

Address	114 Hemingway Crescent
Area	Spruce Grove
Subdivision	Harvest Ridge
City	Spruce Grove
County	ALBERTA
Province	AB
Postal Code	T7X 3W3

### **Amenities**

Amenities	Ceiling 9 ft., No Animal Home, No Smoking Home
Parking	Double Garage Attached

### **Interior**

Interior Features	ensuite bathroom
Appliances	Dishwasher-Built-In, Microwave Hood Fan, Refrigerator, Stove-Electric
Heating	Forced Air-1, Natural Gas
Fireplace	Yes
Fireplaces	Insert
Stories	2
Has Basement	Yes
Basement	Full, Unfinished

### **Exterior**

Exterior	Wood, Stone, Vinyl
Exterior Features	Park/Reserve, Playground Nearby, Schools, Shopping Nearby
Roof	Asphalt Shingles
Construction	Wood, Stone, Vinyl
Foundation	Concrete Perimeter

### **Additional Information**

Date Listed April 1st, 2025

Days on Market 20

Zoning Zone 91

DATA IS DEEMED RELIABLE BUT IS NOT GUARANTEED ACCURATE BY THE REALTORS® ASSOCIATION OF EDMONTON. COPYRIGHT 2025 BY THE REALTORS® ASSOCIATION OF EDMONTON. ALL RIGHTS RESERVED. Trademarks are owned or controlled by the Canadian Real Estate Association (CREA) and identify real estate professionals who are members of CREA (REALTOR®, REALTORS®) and/or the quality of services they provide (MLS®, Multiple Listing Service®)

Listing information last updated on April 21st, 2025 at 5:17am MDT