

Courtesy Of Bill S Bhamra Of Liv Real Estate

\$699,000 - 11332 57 Avenue, Edmonton

MLS® #E4427668

\$699,000

3 Bedroom, 2.50 Bathroom, 1,613 sqft
Single Family on 0.00 Acres

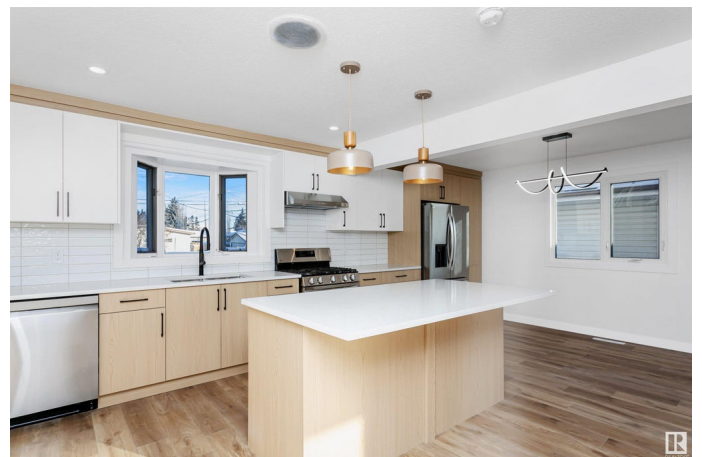
Lendrum Place, Edmonton, AB

Stunning & FULLY renovated 1613 sq. ft. home in the highly sought-after neighbourhood of Lendrum Place! Nestled across from a park & just moments away from top amenities like the U of A, downtown and Southgate. This modern masterpiece combines style and functionality ideal for families. Open concept layout featuring a spacious living room with vinyl plank flooring, bright, all-new chef's dream kitchen with high-end s/s appliances & quartz countertops with a massive island. Family room with a cozy natural gas fireplace & backyard access, perfect for summer BBQs. Upstairs, discover 3 spacious bedrooms, including a primary bedroom with an ensuite, plus an additional 5-piece bath. The fully finished basement is a showstopper & offers a rec room, wet bar, and 4-piece bathroom making it ideal for entertaining. With double attached garage, RV parking, and proximity to a French immersion school, this better than new home truly has it all! Perfect home in a perfect neighbourhood! Some pictures virtually staged.

Built in 1966

Essential Information

| | |
|--------|-----------|
| MLS® # | E4427668 |
| Price | \$699,000 |



| | |
|----------------|------------------------|
| Bedrooms | 3 |
| Bathrooms | 2.50 |
| Full Baths | 2 |
| Half Baths | 1 |
| Square Footage | 1,613 |
| Acres | 0.00 |
| Year Built | 1966 |
| Type | Single Family |
| Sub-Type | Detached Single Family |
| Style | 4 Level Split |
| Status | Active |

Community Information

| | |
|-------------|-----------------|
| Address | 11332 57 Avenue |
| Area | Edmonton |
| Subdivision | Lendrum Place |
| City | Edmonton |
| County | ALBERTA |
| Province | AB |
| Postal Code | T6H 1B1 |

Amenities

| | |
|----------------|--|
| Amenities | Parking-Extra, Patio, Smart/Program. Thermostat, R.V. Storage, Wet Bar |
| Parking Spaces | 5 |
| Parking | Double Garage Attached |

Interior

| | |
|-------------------|--|
| Interior Features | ensuite bathroom |
| Appliances | Dishwasher-Built-In, Dryer, Garage Opener, Hood Fan, Oven-Microwave, Storage Shed, Stove-Gas, Washer |
| Heating | Forced Air-2, Natural Gas |
| Fireplace | Yes |
| Fireplaces | Brick Facing |
| Stories | 4 |
| Has Basement | Yes |
| Basement | Full, Finished |

Exterior

| | |
|-------------------|---|
| Exterior | Wood, Brick, Metal, Stucco |
| Exterior Features | Back Lane, Fenced, Fruit Trees/Shrubs, Golf Nearby, Landscaped, Playground Nearby, Public Transportation, Schools, Shopping Nearby, Ski Hill Nearby |
| Roof | Asphalt Shingles |
| Construction | Wood, Brick, Metal, Stucco |
| Foundation | Concrete Perimeter |

Additional Information

Date Listed March 27th, 2025

Days on Market 11

Zoning Zone 15

DATA IS DEEMED RELIABLE BUT IS NOT GUARANTEED ACCURATE BY THE REALTORS® ASSOCIATION OF EDMONTON. COPYRIGHT 2025 BY THE REALTORS® ASSOCIATION OF EDMONTON. ALL RIGHTS RESERVED. Trademarks are owned or controlled by the Canadian Real Estate Association (CREA) and identify real estate professionals who are members of CREA (REALTOR®, REALTORS®) and/or the quality of services they provide (MLS®, Multiple Listing Service®)

Listing information last updated on April 7th, 2025 at 9:17pm MDT