

## \$200,000 - 313 11445 Ellerslie Road, Edmonton

MLS® #E4426481

**\$200,000**

2 Bedroom, 2.00 Bathroom, 789 sqft  
Condo / Townhouse on 0.00 Acres

Rutherford (Edmonton), Edmonton, AB

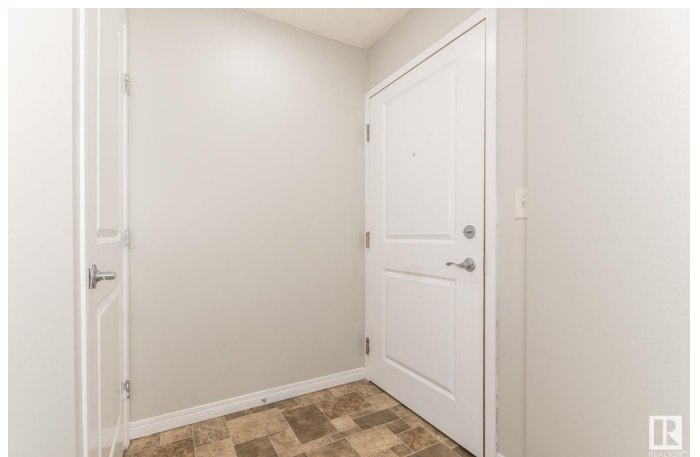
This two bedroom 2 bathroom condo is conveniently located in Ellerslie Road. Spacious living and dining room. Stainless steel appliances. Primary bedroom with walk in closet and 3 piece ensuite bathroom. The good sized balcony can be accessible from the living room and primary bedroom. The primary bedroom can fit king size bed. There is ensuite laundry. Very close to schools and shopping centers. Public transportation is steps away. The condo fees includes heat, water and electricity.

Built in 2005

### Essential Information

MLS® #	E4426481
Price	\$200,000
Bedrooms	2
Bathrooms	2.00
Full Baths	2
Square Footage	789
Acres	0.00
Year Built	2005
Type	Condo / Townhouse
Sub-Type	Lowrise Apartment
Style	Single Level Apartment
Status	Active

### Community Information



Address	313 11445 Ellerslie Road
Area	Edmonton
Subdivision	Rutherford (Edmonton)
City	Edmonton
County	ALBERTA
Province	AB
Postal Code	T6W 1T1

### **Amenities**

Amenities	See Remarks
Parking Spaces	1
Parking	Underground

### **Interior**

Interior Features	ensuite bathroom
Appliances	Euro Washer/Dryer Combo, Microwave Hood Fan, Refrigerator, Stove-Electric
Heating	Baseboard, Electric
# of Stories	4
Stories	1
Has Basement	Yes
Basement	None, No Basement

### **Exterior**

Exterior	See Remarks, Brick, Stucco
Exterior Features	Airport Nearby, Flat Site, Landscaped, Schools, Shopping Nearby
Roof	Unknown
Construction	See Remarks, Brick, Stucco
Foundation	Concrete Perimeter

### **Additional Information**

Date Listed	March 19th, 2025
Days on Market	19
Zoning	Zone 55
Condo Fee	\$663

DATA IS DEEMED RELIABLE BUT IS NOT GUARANTEED ACCURATE BY THE REALTORS® ASSOCIATION OF EDMONTON. COPYRIGHT 2025 BY THE REALTORS® ASSOCIATION OF EDMONTON. ALL RIGHTS RESERVED. Trademarks are owned or controlled by the Canadian Real Estate Association (CREA) and identify real estate professionals who are members of CREA (REALTOR®, REALTORS®) and/or the quality of services they provide (MLS®, Multiple Listing Service®)

Listing information last updated on April 7th, 2025 at 7:02pm MDT