

Courtesy Of George M Fahmy and Nia Pavesi Of Mozaic Realty Group

## \$338,990 - 20431 16 Avenue, Edmonton

MLS® #E4420915

**\$338,990**

2 Bedroom, 2.50 Bathroom, 1,347 sqft  
Single Family on 0.00 Acres

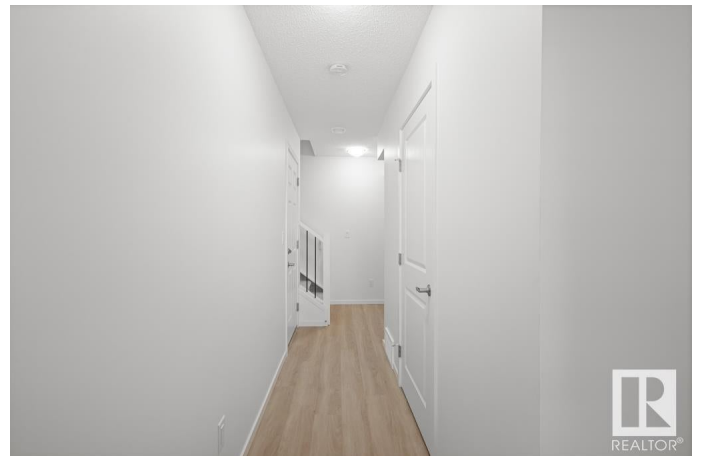
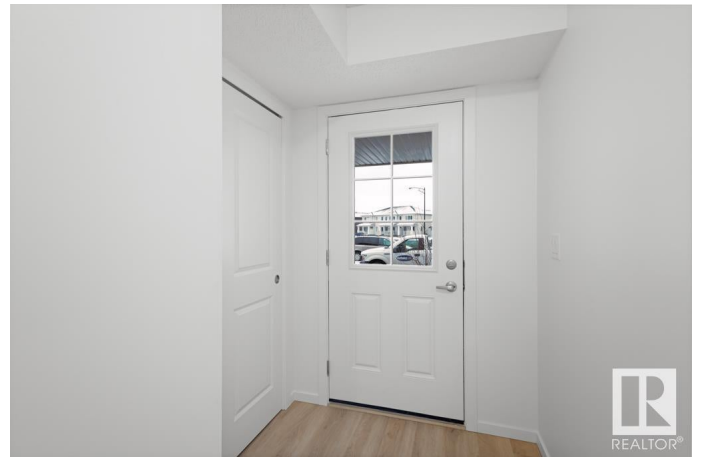
Stillwater, Edmonton, AB

Brand New Home by Mattamy Homes in the master planned community Stillwater. This stunning ELARA townhome offers 2 bedrooms and 2 1/2 bathrooms. The lower level features a convenient single attached garage and mudroom. The open concept and inviting main floor features a half bath and balcony for those summer BBQ's. The kitchen is a cook's paradise, with included kitchen appliances, quartz countertops, and an island perfect for entertaining. Head upstairs to discover the laundry room, full 4 piece bath, and 2 bedrooms. The master is a true oasis, complete with a walk-in closet and luxurious ensuite. Enjoy the added benefits of this home with no condo fees and front yard landscaping. Enjoy access to amenities including a playground, planned schools, commercial, a wetland reserve, and recreational facilities, sure to compliment your lifestyle! There is an HOA Fee. UNDER CONSTRUCTION! \*photos are for representation only. Colors and finishings may vary\*

Built in 2025

### Essential Information

MLS® #	E4420915
Price	\$338,990
Bedrooms	2



Bathrooms	2.50
Full Baths	2
Half Baths	1
Square Footage	1,347
Acres	0.00
Year Built	2025
Type	Single Family
Sub-Type	Residential Attached
Style	3 Storey
Status	Active

### **Community Information**

Address	20431 16 Avenue
Area	Edmonton
Subdivision	Stillwater
City	Edmonton
County	ALBERTA
Province	AB
Postal Code	T6M 2P7

### **Amenities**

Amenities	Carbon Monoxide Detectors, Detectors Smoke, Vinyl Windows, See Remarks
Parking	Single Garage Attached

### **Interior**

Interior Features	ensuite bathroom
Appliances	Dishwasher-Built-In, Garage Control, Garage Opener, Microwave Hood Fan, Refrigerator, Stove-Electric
Heating	Forced Air-1, Natural Gas
Stories	3
Has Basement	Yes
Basement	None, No Basement

### **Exterior**

Exterior	Wood, Vinyl
Exterior Features	Partially Landscaped, Playground Nearby, Schools, See Remarks
Roof	Asphalt Shingles
Construction	Wood, Vinyl

Foundation Concrete Perimeter

### **School Information**

Elementary Constable Daniel Woodall

Middle St. John XXIII

### **Additional Information**

Date Listed February 6th, 2025

Days on Market 60

Zoning Zone 57

HOA Fees 500

HOA Fees Freq. Annually

DATA IS DEEMED RELIABLE BUT IS NOT GUARANTEED ACCURATE BY THE REALTORS® ASSOCIATION OF EDMONTON. COPYRIGHT 2025 BY THE REALTORS® ASSOCIATION OF EDMONTON. ALL RIGHTS RESERVED. Trademarks are owned or controlled by the Canadian Real Estate Association (CREA) and identify real estate professionals who are members of CREA (REALTOR®, REALTORS®) and/or the quality of services they provide (MLS®, Multiple Listing Service®)

Listing information last updated on April 7th, 2025 at 5:32pm MDT