

\$549,997 - 17345 6a Street, Edmonton

MLS® #E4416097

\$549,997

3 Bedroom, 2.50 Bathroom, 1,753 sqft
Single Family on 0.00 Acres

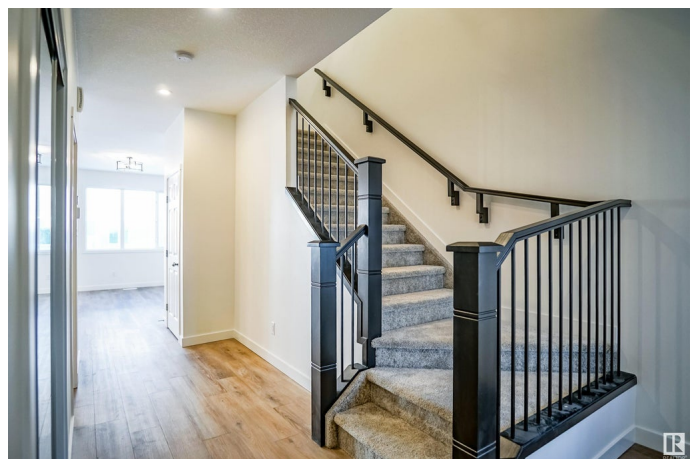
Marquis, Edmonton, AB

Welcome to the "Willow" built by the award-winning builder Pacesetter homes and is located in the heart Marquis and just steps to the walking trails and parks. As you enter the home you are greeted by luxury vinyl plank flooring throughout the great room, kitchen, and the breakfast nook. Your large kitchen features tile back splash, an island a flush eating bar, quartz counter tops and an undermount sink. Just off of the kitchen and tucked away by the front entry is a 2 piece powder room. Upstairs is the master's retreat with a large walk in closet and a 4-piece en-suite. The second level also include 2 additional bedrooms with a conveniently placed main 4-piece bathroom and a good sized bonus room. The unspoiled basement has a side separate entrance and larger then average windows perfect for a future suite. Close to all amenities and also comes with a side separate entrance perfect for future development.*** Pictures are of the show home the colors and finishing's may vary , Complete by May of 2025 **

Built in 2024

Essential Information

MLS® #	E4416097
Price	\$549,997



Bedrooms	3
Bathrooms	2.50
Full Baths	2
Half Baths	1
Square Footage	1,753
Acres	0.00
Year Built	2024
Type	Single Family
Sub-Type	Detached Single Family
Style	2 Storey
Status	Active

Community Information

Address	17345 6a Street
Area	Edmonton
Subdivision	Marquis
City	Edmonton
County	ALBERTA
Province	AB
Postal Code	T5Y 4E9

Amenities

Amenities	See Remarks
Parking	Double Garage Attached

Interior

Interior Features	ensuite bathroom
Appliances	Garage Control, Garage Opener
Heating	Forced Air-1, Natural Gas
Stories	2
Has Basement	Yes
Basement	Full, Unfinished

Exterior

Exterior	Wood, Stone, Vinyl
Exterior Features	Airport Nearby, Golf Nearby, Park/Reserve, Playground Nearby, Public Swimming Pool, Public Transportation, Schools, Shopping Nearby, See Remarks
Roof	Asphalt Shingles

Construction Wood, Stone, Vinyl
Foundation Concrete Perimeter

Additional Information

Date Listed December 13th, 2024
Days on Market 127
Zoning Zone 51

DATA IS DEEMED RELIABLE BUT IS NOT GUARANTEED ACCURATE BY THE REALTORS® ASSOCIATION OF EDMONTON. COPYRIGHT 2025 BY THE REALTORS® ASSOCIATION OF EDMONTON. ALL RIGHTS RESERVED. Trademarks are owned or controlled by the Canadian Real Estate Association (CREA) and identify real estate professionals who are members of CREA (REALTOR®, REALTORS®) and/or the quality of services they provide (MLS®, Multiple Listing Service®)

Listing information last updated on April 19th, 2025 at 3:17am MDT